

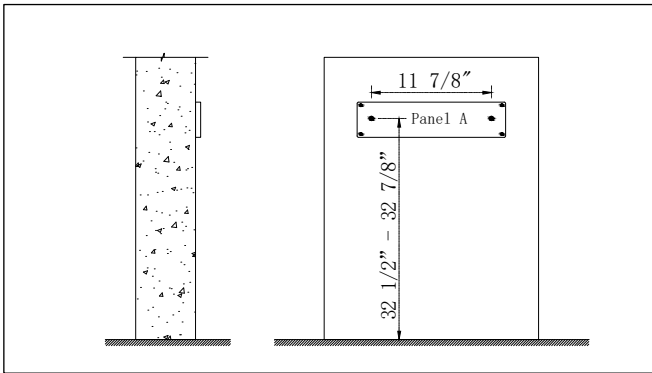
Bathtub hamac - Installation guide

- Read the instructions carefully before starting the installation.
- The bathtub must be installed by a licensed plumber.
- At least two people are required to properly install this product.
- To avoid the risk of injury, do not hold or lift the bathtub by the rim.

Ensure proper support under the feet.

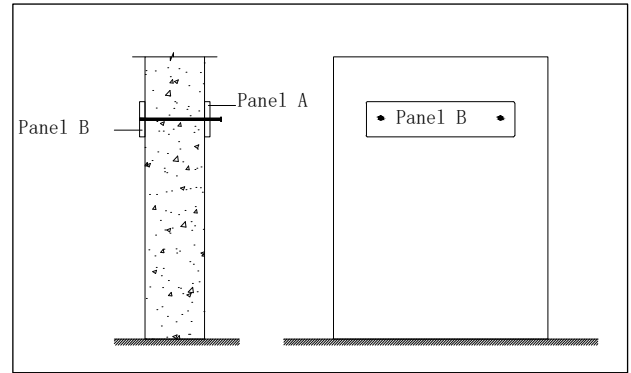
- The manufacturer is not responsible for any damage to the bathtub or personal belongings resulting from improper installation. Failure to follow the installation instructions will void your warranty.
- Unpack and inspect the bathtub for any damage. Keep it in its box until you are ready to install it.
- The structure supporting the bathtub must be capable of bearing the weight of the bathtub when filled with water. The structure must comply with local building codes.

Step 1



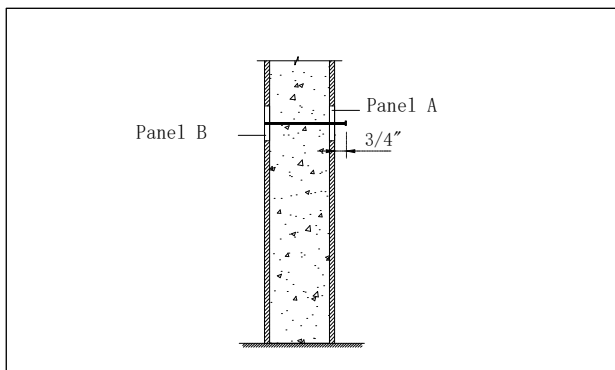
On the rough wall, determine the mounting position of the hanger and the opening position of the nut. The height of nut opening center point is $32 \frac{1}{2} - 32 \frac{7}{8}$ from the ground, the center distance between the two holes is $11 \frac{7}{8}$, and the hole diameter is $\frac{3}{4}$ ". When installing the hangers on both sides, ensure that the horizontal installation height of the hangers is uniform.

Step 2



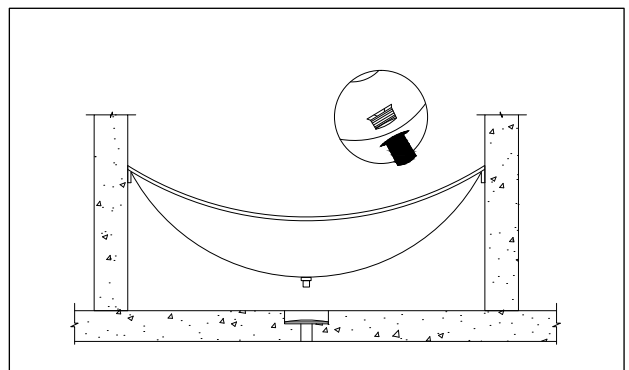
After the installation of the A board is completed, first pass the two extension nuts through the B board, and then insert them into the two large holes, connect the nuts on the side of the A board with a screw, and tighten them (as shown in the side view). In order to ensure safe suspension, the wall should be a solid load-bearing wall, and the thickness is recommended not to be greater than the length of the extension nut into the wall.

Step 3



After installing the floating bathtub fixings, tiles can be affixed to the wall. The total thickness of the wall after filling is within the range of $7 \frac{3}{4}$ " - $8 \frac{5}{8}$ ". The screw rod should be exposed by $\frac{7}{8}$ " on the side wall of the bathtub for easy adjustment of the length.

Step 4



Before hanging the bathtub, screw on the black drain accessories, and then hang the bathtub on the screws on both sides, and the installation is complete.